



**When clean air saves lives,
it's also our concern.**

Metaflex. Meet reliability.





About Metaflex

When it comes to caring for people's health, food safety and scientific research, only the best is good enough. To achieve this, you need experts. Experts who have the right facilities and instruments at their disposal. This, in turn, requires hygienic, safe, and reliable environments.

Environments that allow no room for risks and uncertainties. We're talking about conditioned and controlled air spaces that meet the highest requirements and standards. Where safety and hygiene are of the utmost importance. Yet, the processes in these spaces must also be carried out in a flexible, comfortable and cost-efficient manner. Altogether no small feat!

That's where Metaflex comes in. We develop and deliver high-tech door systems for the global healthcare, cold chain and life science markets and offer solutions that are renowned the world over for their extraordinary safety, reliability and sustainability.

For you

We at Metaflex help you overcome the challenges involved in creating the right environments. By creating spaces with our door systems that meet all the necessary life sciences & healthcare standards: Sterile. Hygienic. Safe. Functional. Ergonomic.

We don't stand alone in all this, though. Over 40 years of experience has taught us how important it is to listen and work together. That is why we make the journey, from initiation to operation and follow-up, together with you. From design to assembly, we create our doors based on your specific situations, objectives and wishes. Each new project is a completely new journey.

To stand still is to go backwards. That's why we make sure we keep up with any technological innovations and new insights in the market. Just so we are able to give you exactly what you need: Absolute Reliability. In every aspect. From quality advice to quality product. From project proposal to end result.



Do you have any more questions about our products?
Please contact us to find out how we can help you, or go to www.metaflexdoors.com for more information.

Metaflex. Meet reliability.

Metaflex Life science & Healthcare sliding doors

	Medicare	Medicare Sound	Medicare EI ₁	Medicare Glass	Medinox	Metaficient	Metaficient Sound
Properties							
Sliding door	•	•	•	•	•	•	•
Hygienic finishing	•	•	•	•	•	•	•
Air permeability ANSI/UL 1784	•	•		•			
Air permeability class compliant EN 1026/12207	4 (D)	4 (D)	4 (D)	4 (D)	4 (D)		
Smoke resistant EN 1634-3	•		•	•			
Fire resistant EI1 EN 1363-1/EN 1634-1			30 / 60 min				
Radiation resistant (optional) lead insert	1-4mm		1-3mm		1 / 3 mm		
Noise reducing lab value practice	Rw'p = 27 dB	Rw'p = 37 dB	Rw'p = 31dB	Rw'p = 30 dB	Rw'p = 31dB	Rw'p = 28 dB	Rw'p = 35 dB
Noise Reduction door leaf	Rw = 28 dB	Rw = 39 dB	Rw = 33 dB	Rw = 32 dB	Rw = 35 dB	Rw = 32 dB	Rw = 35 dB
Fully transparent				•			
CE marked	•	•	•	•	•	•	•
Dimensions (in mm)							
Inside frame width	800 - 2.100	800 - 2.000	800 - 2.000	800 - 1.750	900 - 1.780	800 - 2.000	800 - 2.000
Inside frame height	max. 2.700	max. 2.600	max. 2.700	max. 2.300	max. 2.700	max. 2.700	max. 2.600
Door leaf thickness	60	60	60-65	60	60	40	40
Door leaf finishing							
HPL 0.7 mm	•	•	•			•	•
HPL 4 mm (optional)	•						
Stainless steel					•		
Glass				•			
Frame							
Single sided corner profile	•	•		•	•	•	•
Malmö	•	•		•		•	•
Halmstad	•	•		•		•	•
Oslo	•	•		•	•	•	•
Helsinki	•	•		•	•	•	•
EI ₁ front frame			•				

Product overview

Metaflex Life science & Healthcare sliding doors

	Medicare	Medicare Sound	Medicare EI ₁	Medicare Glass	Medinox	Metaficient	Metaficient Sound
Canopy							
Canopy low	•	•	•	•	•	•	•
Canopy high	•	•	•	•	•	•	•
Canopy ceiling	•	•	•	•	•	•	•
Canopy cove	•	•	•	•	•	•	•
Operation							
Manual	•	•		•	•	•	•
Automatic	•	•	•	•	•	•	•
Rail system	MF5	MF5	MF5	MF5	MF5	MF5	MF5
Window (optional)							
400 x 400 mm 300 x 600 mm 600 x 600 mm	•	•	•		•	•	
Other dimensions available on request	•	•	•		•	•	
Maximum glass size IFW = inside frame width IFH = inside frame height	IFW-400 IFH-450	IFW-400 IFH-450	clear view 850 x 850 mm		IFW-400 IFH-450	IFW-400 IFH-450	
Slat blinds, manual or electric	•	•	•		•	•	
Smart Glass	•	•	•	•	•	•	
Laser resistant glass/screens	•	•			•	•	
Other options							
Double leaf version	•			•		•	
Various options for operation and protection	•	•	•	•	•	•	•
Metaflex Imagine foil	•	•	•			•	•
Lead lining 1-3mm	•		•		•		
Medical grounding	G1, G2	G1, G2	G1, G2	G1, G2	G1	G1, G2	G1, G2
Intelligence	•						

Metaflex Medicare

It is essential to guarantee the safety of your patients, clients, and employees under all circumstances. This is also the principle of the Medicare sliding door, which ensures a complete hermetic seal. When opening and closing, air displacement is minimal. This is especially important in rooms with conditioned or contaminated air. The room remains airtight even when there is significant underpressure or overpressure.

The Medicare is smoke-proof according to EN 1634-3. In the event of a fire, this can offer life-saving protection against suffocation from outside smoke. Also available in radiation-proof, sound-proof, and/or fire-resistant versions. The Medicare is a reliable and safe choice for your operating room, dressing room, pharmacy, radiation-proof room, quarantine room, or clean room.



Automated or manual sliding door



Hygienic flush finish



Air permeability according to ANSI/UL 1784, EN 1026/12207 class 4 (D)



Smoke resistant according to EN 1634-3



Noise reducing up to 28 dB



Radiation-resistant version also available



CE marked



Metaflex Medicare



Dimensions

Inside frame width:
800 to 2,100 mm

Inside frame height:
2,100 to 2,700 mm

Automation (optional)

Available with powerful and reliable Metaflex automation.

Automation consisting of a motor, drive, and controller is concealed under the cover. The opening and closing time is variably adjustable up to 0.8 m/s. Equipped with obstacle protection in the reveal opening. The system complies with machine guidelines and is compatible with EN16005 safety regulations. Comes standard with human passage and lock function with up to three other doors.

Various options for operation and protection available.

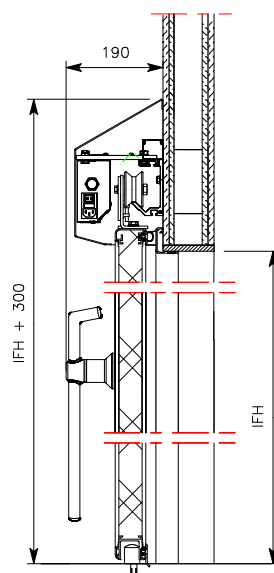
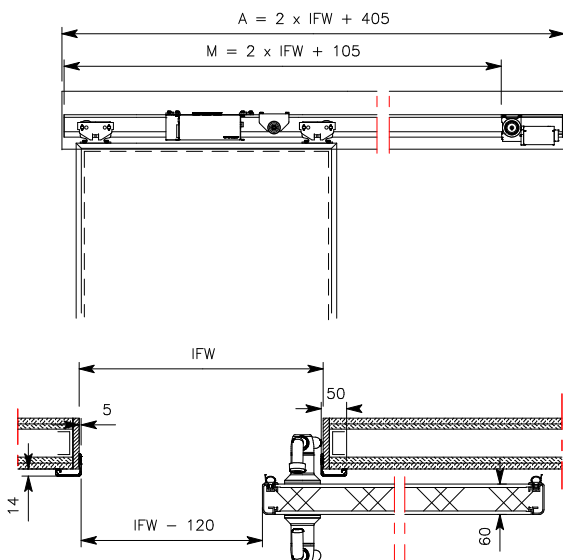
- Door leaf** The door leaf has a thickness of 60 mm, has a polyurethane core (CFC free) with an MDF barrier layer on both sides, and is finished with 0.7 mm high-pressure laminate (HPL). The aluminium border has rounded corners and is flush with the door leaf.
- Seal** All around, the door leaf is finished with a high quality and easily replaceable EPDM sealing profile. When closed, the rubber is pressed against the frame and floor for a complete air and smoke-tight seal.
- Frame** Choice of single sided corner profile, Malmö, Halmstad, Oslo, or Helsinki frame.
- Rail** Low-noise aluminium rail construction with indentation, type MF5. The placement of the nylon wheels on the rails prevents the adherence of dirt and wear.
- Canopy** Detachable canopy type Low, High, Ceiling, or Cove. Made from aluminium RAL 9006 or 9010, with a plastic end caps on either side or completely made of stainless steel.
- Operation** Stainless-steel inside/outside opener with lever mechanism, allowing for the door to be opened effortlessly.
- Optional**
 - Two-wing version (not in combination with smoke resistance)
 - Door leaf finish of 4 mm HPL instead of MDF barrier (for clean rooms)
 - Various options for operation and protection
 - Various window and blind options
 - Lead lining 1-3 mm
 - Medical grounding: potential equalisation or insulated
 - Imagine foil
- Certificates** Highest classifications based on air permeability according to:
 - ANSI/UL 1784:1997 up to an overpressure of up to 100 Pa, recorded in Peutz Report B1080-2.
 - EN 1026/12207; class 4 (D).

Noise reducing up to $R_w = 28$ dB (door leaf value) and $R_w'p = 27$ dB (practice value), according to ISO10140-1:2021 and ISO 717-1:2020.

Hot (S200) and cold (Sa) smoke resistant according to EN 1634-3:2004 and EN 13501-2, class C5 according to EN 1191:2012

When equipped with automation; CE marked according to Machinery Directive 2006/42/EC, Low Voltage Directive 2014/35/EC, EMC Directive 2014/30/EC.

In this review we will give you an idea of our capabilities. We offer not only standard solutions but also customised solutions.
Would you like more information? Please contact us, we will gladly think along and advise you.



A =	Automatic
M =	Manually
IFW =	Inside frame width
IFH =	Inside frame height

Metaflex Medicare Sound

In environments that require silence and concentration, it is important that the airtight doors also exclude as much noise as possible. Naturally, you can expect this feature from the soundproof Medicare Sound. The unique core of this door absorbs ambient noise up to an impressive 39 dB (lab value practice, Rw'p according to ISO717-1). Combined with the extremely quiet Metaflex Automation, the doors open and close almost noiselessly.

You will be assured of a pleasant environment in which patients can rest and professionals can optimally concentrate. The Medicare Sound is a reliable choice for, for example, operating rooms, intensive care, isolation rooms, or clean rooms.



Automated or manual sliding door



Hygienic flush finish



Air permeability according to ANSI/UL 1784, EN 1026/12207 class 4 (D)



Noise reducing up to 39 dB



CE marked



Metaflex Medicare Sound



Dimensions

Inside frame width:
800 to 2,000 mm

Inside frame height:
2,100 to 2,600 mm

Automation (optional)

Available with powerful and reliable Metaflex automation.

Automation consisting of a motor, drive, and controller is concealed under the cover. The opening and closing time is variably adjustable up to 0.8 m/s. Equipped with obstacle protection in the reveal opening. The system complies with machine guidelines and is compatible with EN16005 safety regulations. Comes standard with human passage and lock function with up to three other doors.

Various options for operation and protection available.

In this review we will give you an idea of our capabilities. We offer not only standard solutions but also customised solutions.

Would you like more information?

Please contact us, we will gladly think along and advise you.

Door leaf The door leaf has a thickness of 60 mm, has a noise-resistant core with an MDF barrier layer on both sides, and is finished with 0.7 mm high-pressure laminate. The aluminium border has rounded corners and is flush with the door leaf.

Seal All around, the door leaf is finished with a high quality and easily replaceable EPDM sealing profile. When closed, the rubber is pressed against the frame and floor for a fully airtight seal.

Frame Choice of single sided corner profile, Malmö, Halmstad, Oslo, or Helsinki frame.

Rail Low-noise aluminium rail construction with indentation, type MF5. The placement of the nylon wheels on the rails prevents the adherence of dirt and wear.

Canopy Detachable canopy type Low, High, Ceiling, or Cove. Made from aluminium RAL 9006 or 9010, with a plastic end caps on either side or completely made of stainless steel.

Operation Stainless-steel inside/outside opener with lever mechanism, allowing for the door to be opened effortlessly.

Optional

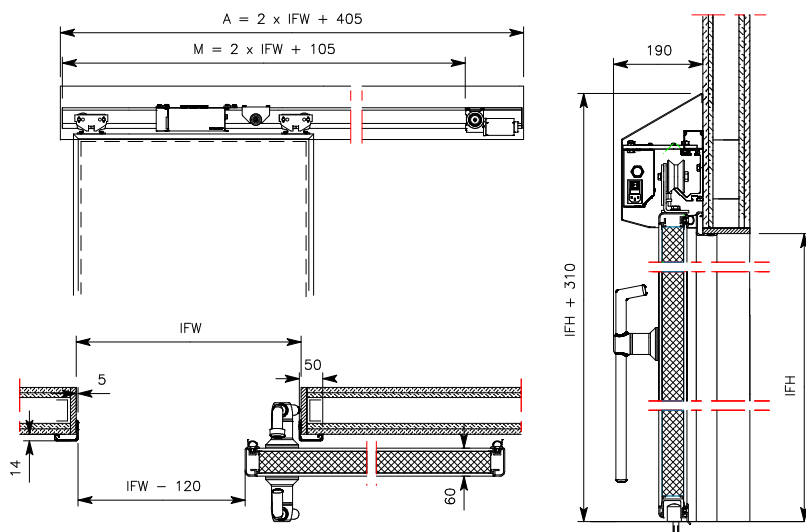
- Various options for operation and protection
- Various window and blind options
- Medical grounding: potential equalisation or insulated
- Imagine foil

Certificate Highest classifications based on air permeability according to:

- ANSI/UL 1784:1997 up to an overpressure of up to 100 Pa, recorded in Peutz Report B1080-2.
- EN 1026/12207; class 4 (D)

Noise-reducing up to $R_w = 39$ dB (door leaf value) and $R_w'p = 37$ dB (practice value), according to ISO10140-1:2021 and ISO 717-1:2020.

When equipped with automation: CE marked according to Machinery Directive 2006/42/EC, Low Voltage Directive 2014/35/EC, EMC Directive 2014/30/EC.



A =	Automatic
M =	Manually
IFW =	Inside frame width
IFH =	Inside frame height



Metaflex Medicare E1₁

What is your top priority in case of an unexpected fire? Indeed, buying enough time to get people to safety! With this in mind, Metaflex supplies the 30 or 60-minute fire-resistant Metaflex Medicare E1₁: the first hermetically sealing sliding door system with the highest E1₁ standard according to EN 1634-1 & smoke resistant according to EN 1634-3

EN 1634-1 is the European standard for fire resistance of doors. The E1₁ classification is awarded after intensive testing has been carried out to ensure that the door stops flames (E), does not overheat (I), and does not release too much heat (W). The Medicare E1₁ is the reliable door system for environments with high fire safety requirements, such as operating rooms, intensive care, X-ray rooms, pharmacies, and emergency care.



Automated sliding door



Hygienic flush finish



Air permeability according to EN 1026/12207 class 4 (D)



Smoke resistant according to EN 1634-3



Fire-resistant according to EN 1634-1



Radiation-resistant version also available



Noise reducing up to 33 dB



CE marked



Metaflex Medicare E1₁



Dimensions

Inside frame width:
800 to 2,000 mm

Inside frame height:
2,100 to 2,700 mm

Automation

Equipped with powerful and reliable Metaflex automation.

Automation consisting of a motor, drive, and controller is concealed under the cover. The opening and closing time is variably adjustable up to 0.8 m/s. Equipped with obstacle protection in the reveal opening. The system complies with machine guidelines and is compatible with EN16005 safety regulations. Comes standard with human passage and lock function with up to three other doors.

Various options for operation and protection available.

In this review we will give you an idea of our capabilities. We offer not only standard solutions but also customised solutions.

Would you like more information?

Please contact us, we will gladly think along and advise you.

Door leaf The door leaf has a thickness of 60-65 mm, has a fire-resistant core with an MDF barrier layer on both sides and is finished with 0.7 mm high pressure laminate, and is finished with high-pressure laminate on both sides. The aluminium border has rounded corners and is flush with the door leaf.

Seal All around, the door leaf is finished with a high quality and easily replaceable EPDM sealing profile. When closed, the rubber is pressed against the frame and floor for a complete air and smoke-tight seal. A heat-responsive material has been applied parallel to the seal profile. This guarantees a good seal in the event of fire.

Frame Stainless-steel fire-retarding front frame with three-sided labyrinth. A heat-reacting material has been applied to the frame.

Rail Low-noise aluminium rail construction with indentation, type MF5. The placement of the nylon wheels on the rails prevents the adherence of dirt and wear.

Canopy Detachable canopy type Low, High, Ceiling, or Cove. Made from aluminium RAL 9006 or 9010, with a plastic headboard on either side or completely made of stainless steel.

Operation Stainless-steel inside/outside opener with lever mechanism, allowing for the door to be opened effortlessly.

Optional

- Various options for operation and protection
- Various window and blind options up to 850 x 850 mm
- Lead lining 1-3 mm
- Medical grounding: potential equalisation or insulated
- Imagine foil

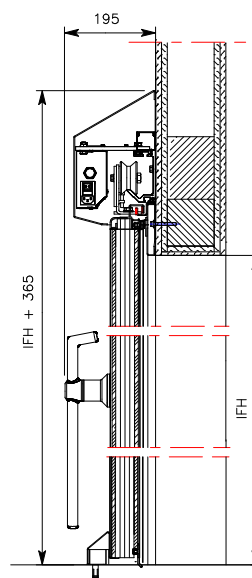
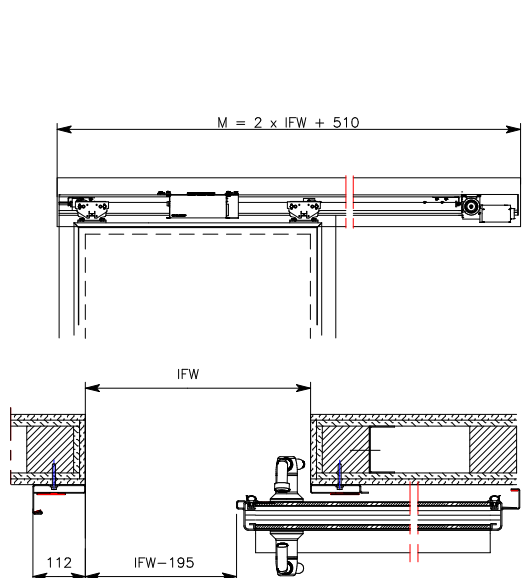
Certificates Highest classifications based on air permeability according to: EN 1026/12207 class 4 (D).

30 or 60 min. fire resistant according to EN 1363-1:2012-10 and EN 1634-1:2014-03, classifications E, E1, E2, EW (30 and 60 minutes).

Hot (S200) and cold (Sa) smoke resistant according to EN 1634-3:2004 and EN 13501-2, class C5 according to EN 1191:2012.

CE marked according to Machinery Directive 2006/42/EC, Low Voltage Directive 2014/35/EC, EMC Directive 2014/30/EC.

Noise-reducing up to $R_w = 33$ dB (door leaf value) and $R_w'p = 31$ dB (practice value), according to ISO10140-1:2021 and ISO 717-1:2020.



A =	Automatic
M =	Manually
IFW =	Inside frame width
IFH =	Inside frame height

Metaflex Medicare Intelligence

In healthcare, the prevention of misunderstandings, incidents, and errors can save lives. How can a hermetically sealing door system contribute to this? 'People make mistakes because the systems, tasks, and processes with which they work are poorly designed.' (PROF. Lucian leape, Harvard School of Public Health)

Medicare Intelligence reminds, instructs, and warns people on the basis of uniform instructions and intuitive LED warnings. The door is an intelligent information carrier about, for example, latex allergy or radiological activity. This creates or increases attention and contributes to enduring behavioural change, ultimately increasing the safety of the environment. The Intelligence is also a high-quality door system. Thanks to the airtight seal (Peutz), rooms can be optimally conditioned. Metaflex Intelligence is also available in a radiation-resistant version.



Automated or manual sliding door



Hygienic flush finish



Air permeability according to ANSI/UL 1784, EN 1026/12207 class 4 (D)



Smoke resistant according to EN 1634-3



Radiation-resistant version also available



Noise reducing up to 28 dB



CE marked



Metaflex Medicare Intelligence



Dimensions

Inside frame width:
800 to 2,100 mm

Inside frame height:
2,100 to 2,700 mm

Automation (optional)

Available with powerful and reliable Metaflex automation.

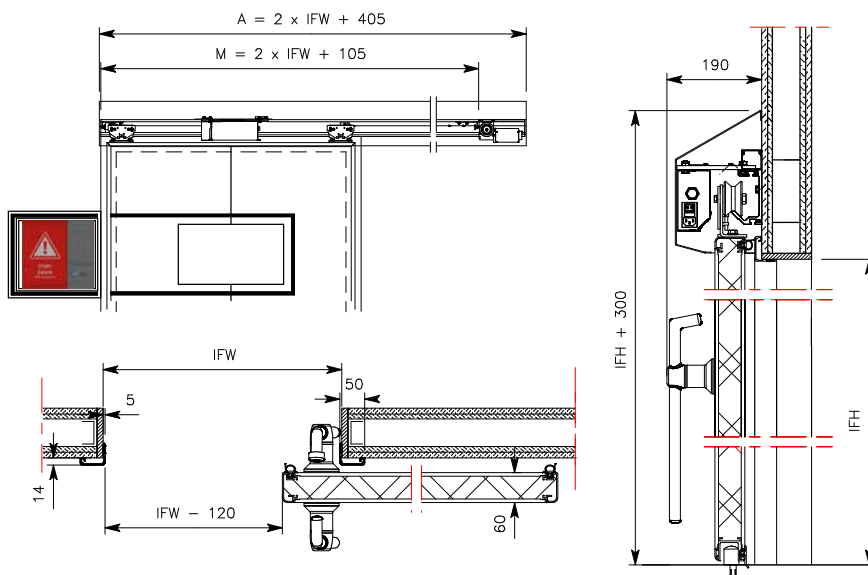
Automation consisting of a motor, drive, and controller is concealed under the cover. The opening and closing time is variably adjustable up to 0.8 m/s. Equipped with obstacle protection in the reveal opening. The system complies with machine guidelines and is compatible with EN16005 safety regulations. Comes standard with human passage and lock function with up to three other doors

Various options for operation and protection available.

In this review we will give you an idea of our capabilities. We offer not only standard solutions but also customised solutions.

Would you like more information? Please contact us, we will gladly think along and advise you.

- Door leaf** The door leaf has a thickness of 60 mm, has a polyurethane core (CFC free) with an MDF barrier layer on both sides, and is finished with 0.7 mm high-pressure laminate (HPL). The aluminium border has rounded corners and is flush with the door leaf.
- Seal** All around, the door leaf is finished with a high quality and easily replaceable EPDM sealing profile. When closed, the rubber is pressed against the frame and floor for a complete air and smoke-tight seal.
- Frame** Choice of single sided corner profile, Malmö, Halmstad, Oslo, or Helsinki frame.
- Rail** Low-noise aluminium rail construction with indentation, type MF5. The placement of the nylon wheels on the rails prevents the adherence of dirt and wear.
- Canopy** Detachable canopy type Low, High, Ceiling, or Cove. Made from aluminium RAL 9006 or 9010, with a plastic headboard on either side or completely made of stainless steel.
- Operation** Stainless-steel inside/outside opener with lever mechanism, allowing for the door to be opened effortlessly.
- Optional**
- Various options for operation and protection
 - Window 600 x 400 and blind options
 - Lead lining 1-3 mm
 - Medical grounding: potential equalisation or insulated
 - Imagine foil
- Certificates** Highest classifications based on air permeability according to:
- ANSI/UL 1784:1997 up to an overpressure of up to 100 Pa, recorded in Peutz Report B1080-2.
 - EN 1026/12207; class 4 (D).
- Noise reducing up to $R_w = 28$ dB (door leaf value) and $R_w'p = 27$ dB (practice value), according to ISO10140-1:2021 and ISO 717-1:2020.
- Hot (S200) and cold (Sa) smoke resistant according to EN 1634-3:2004 and EN 13501-2, class C5 according to EN 1191:2012
- When equipped with automation: CE marked according to Machinery Directive 2006/42/EC, Low Voltage Directive 2014/35/EC, EMC Directive 2014/30/EC.



A =	Canopy length
IFW =	Inside frame width
IFH =	Inside frame height

Metaflex Medicare Glass

Light, openness, and transparency have a positive influence on the moods of people, which benefits both patients and employees. Metaflex Medicare Glass is a fully glazed, fully transparent sliding door for medical and clean room applications.

The door not only provides a lot of light, but also offers excellent monitoring possibilities due to its complete transparency. Comfort combined with practicality: a pleasant living environment for patients, a pleasant working environment for employees, convenient monitoring options, and—thanks to the hermetic seal made by the door—optimum control of air quality. Medicare Glass was initially developed for quarantine rooms, so that despite the door's barrier, there was a visual opening. Today, the Glass also ensures openness, light, and transparency in many laboratories and treatment rooms.



Automated or manual sliding door



Hygienic flush finish



Air permeability according to ANSI/UL 1784, EN 1026/12207 class 4 (D)



Smoke resistant according to EN 1634-3



Fully transparent



Noise reducing up to 32 dB



CE marked



Metaflex Medicare Glass



Dimensions

Inside frame width:
800 to 1,750 mm

Inside frame height:
2.100 to 2,300 mm

Automation (optional)

Available with powerful and reliable Metaflex automation.

Automation consisting of a motor, drive and controller is concealed under the cover. The opening and closing time is variably adjustable up to 0.8 m/s. Equipped with obstacle protection in the reveal opening. The system complies with machine guidelines and is compatible with EN16005 safety regulations. Comes standard with human passage and lock function with up to three other doors.

Various options for operation and protection available.

In this review we will give you an idea of our capabilities. We offer not only standard solutions but also customised solutions.

Would you like more information?

Please contact us, we will gladly think along and advise you.

Door leaf

The door leaf has a thickness of 60 mm, fully glazed with 6-mm tempered glass on both sides, and equipped with a screen printing edge. The aluminium border has rounded corners and is flush with the door leaf.

Seal

All around, the door leaf is finished with a high quality and easily replaceable EPDM sealing profile. When closed, the rubber is pressed against the frame and floor for a complete air and smoke-tight seal.

Frame

Choice of single sided corner profile, Malmö, Halmstad, Oslo, or Helsinki frame.

Rail

Low-noise aluminium rail construction with indentation, type MF5. The placement of the nylon wheels on the rails prevents the adherence of dirt and wear.

Canopy

Detachable canopy type Low, High, Ceiling, or Cove. Made from aluminium RAL 9006 or 9010, with a plastic headboard on either side or completely made of stainless steel.

Operation

Stainless-steel inside/outside opener with lever mechanism, allowing for the door to be opened effortlessly.

Optional

- Two-wing version
- Various options for operation and protection
- Smart Glass blind
- Medical grounding: potential equalisation or insulated

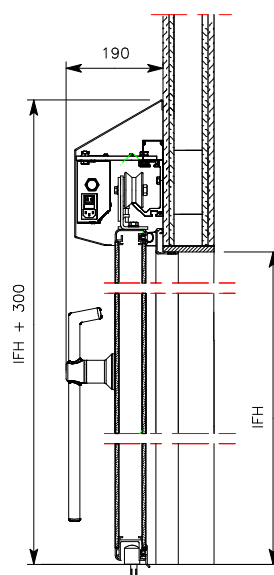
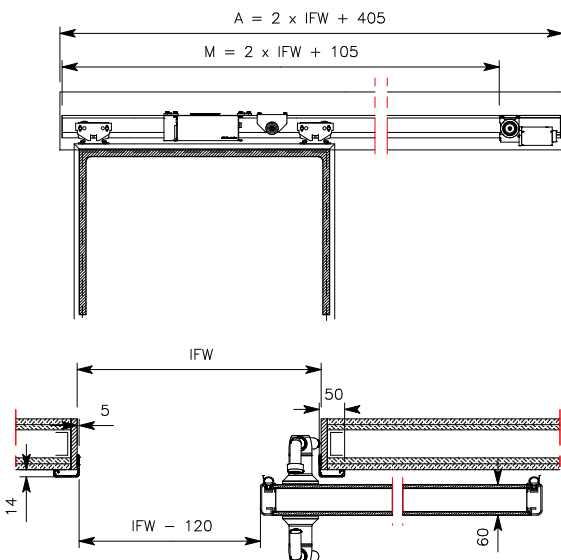
Certificates

Highest classifications based on air permeability according to:
- ANSI/UL 1784:1997 up to an overpressure of up to 100 Pa, recorded in Peutz Report B1080-2.
- EN 1026/12207; class 4 (D).

Hot (S200) and cold (Sa) smoke resistant according to EN 1634-3:2004 and EN 13501-2, class C5 according to EN 1191:2012

When equipped with automation: CE marked according to Machinery Directive 2006/42/EC, Low Voltage Directive 2014/35/EC, EMC Directive 2014/30/EC.

Noise-reducing up to $R_w = 32$ dB (door leaf value) and $R_w'p = 30$ dB (practice value), according to ISO10140-1:2021 and ISO 717-1:2020.



A =	Automatic
M =	Manually
IFW =	Inside frame width
IFH =	Inside frame height

Metaflex Medinox

In Healthcare and Life Science, hygiene is both a logical and an important requirement. The Metaflex Medinox contributes to optimum hygienic conditions; good to be able to rely on. The hermetic Medinox sliding door is completely made of stainless steel. Stainless steel has a difficult adhesive surface for bacteria and contamination to adhere to. Another hygienic plus: thanks to the unique locking system, the door also protects against contamination through air.

Because of the hygienic design, sleek appearance, and airtight closure, the Medinox is often used in operating rooms, isolation rooms, intensive care, clean rooms, and laboratories. With a radiation-resistant filling (lead-lining), this door is also highly suitable for X-ray rooms and hybrid ORs. Safe, reliable, and hygienic!



Automated or manual sliding door



Hygienic flush finish



Air permeability according to EN 1026/12207 class 4 (D)



Radiation-resistant version also available



Noise reducing up to 35 dB



CE marked



Metaflex Medinox



Dimensions

Inside frame width:
900 to 1,780 mm

Inside frame height:
2,100 to 2,700 mm

Automation (optional)

Available with powerful and reliable Metaflex automation.

Automation consisting of a motor, drive and controller is concealed under the cover. The opening and closing time is variably adjustable up to 0.8 m/s. Equipped with obstacle protection in the reveal opening. The system complies with machine guidelines and is compatible with EN16005 safety regulations. Comes standard with human passage and lock function with up to three other doors.

Various options for operation and protection available.

In this review we will give you an idea of our capabilities. We offer not only standard solutions but also customised solutions.

Would you like more information?

Please contact us, we will gladly think along and advise you.

Door leaf

The door leaf has a thickness of 60 mm, has a polyurethane core (CFC-free), and is seamlessly finished with brushed or coated stainless steel with a wall thickness of 1,5 mm.

Seal

All around, the door leaf is finished with a high quality and easily replaceable EPDM sealing profile. When closed, the rubber is pressed against the frame and floor for a fully airtight seal.

Frame

Choice of single sided corner profile, Oslo, or Helsinki frame.

Rail

Low-noise aluminium rail construction with indentation, type MF5. The placement of the nylon wheels on the rails prevents the adherence of dirt and wear.

Canopy

Detachable canopy type Low, High, Ceiling, or Cove. Made from stainless steel.

Operation

Stainless-steel inside/outside opener with lever mechanism, allowing for the door to be opened effortlessly.

Optional

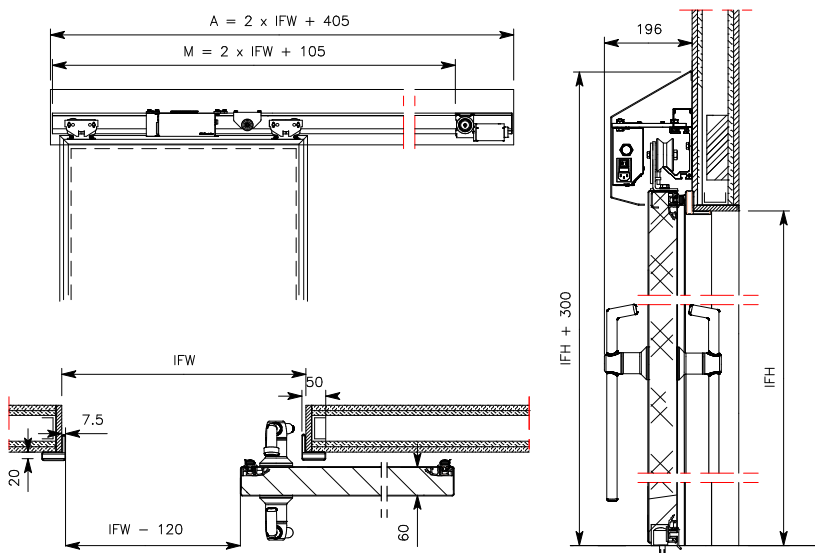
- Various options for operation and protection
- Various window and blind options
- Lead lining 1-3 mm
- Medical grounding: potential equalisation or insulated
- Powdercoated door leaf and/or canopy

Certificates

Highest classifications based on air permeability according to: EN 1026/12207; class 4 (D).

When equipped with automation: CE marked according to Machinery Directive 2006/42/EC, Low Voltage Directive 2014/35/EC, EMC Directive 2014/30/EC.

Noise-reducing up to $R_w = 35$ dB (door leaf value) and $R_w'p = 31$ dB (practice value), according to ISO10140-1:2021 and ISO 717-1:2020.



A =	Automatic
M =	Manually
IFW =	Inside frame width
IFH =	Inside frame height

Metaflex Metaficient

In the event of heavy traffic from beds and wheelchairs, doors can be an annoying obstacle. Fortunately, the Metaflex Metaficient proves there is also a safe, hygienic, and easy option.

The Metaficient is a hygienic sliding door that has been specially designed by Metaflex for the aforementioned situations. The door saves user space and increases safety. After all, it does not rotate, but instead opens to the side. Thanks to its seamless design and sloping cap, the Metaficient does not attract dust and is easy to clean. The Metaflex Metaficient is ideal for environments that require ease of use, safety, and hygiene (such as bed rooms, storage rooms, and waiting rooms).



Automated or manual sliding door



Hygienic flush finish



Noise reducing up to 28 dB



CE marked



Metaflex Metaficient



Dimensions

Inside frame width:
800 to 2,000 mm

Inside frame height:
2,100 to 2,700 mm

Automation (optional)

Available with powerful and reliable Metaflex automation.

Automation consisting of a motor, drive and controller is concealed under the cover. The opening and closing time is variably adjustable up to 0.8 m/s. Equipped with obstacle protection in the reveal opening. The system complies with machine guidelines and is compatible with EN16005 safety regulations. Comes standard with human passage and lock function with up to three other doors.

Various options for operation and protection available.

Door leaf The door leaf has a thickness of 40 mm, has a wood-fibre core with an MDF barrier layer on both sides, and is finished with high-pressure laminate. The aluminium border has rounded corners and is flush with the door leaf.

Seal All around, the door leaf is finished with a high quality and easily replaceable EPDM sealing profile. When closed, the rubber is pressed against the frame and floor.

Frame Choice of single sided corner profile, Malmö, Halmstad, Oslo, or Helsinki frame.

Rail Low-noise aluminium rail construction with indentation, type MF5. The placement of the nylon wheels on the rails prevents the adherence of dirt and wear.

Canopy Detachable canopy type Low, High, Ceiling, or Cove. Made from aluminium RAL 9006 or 9010, with a plastic headboard on either side or completely made of stainless steel.

Operation Equipped with a stainless-steel D-shaped handle on both sides.

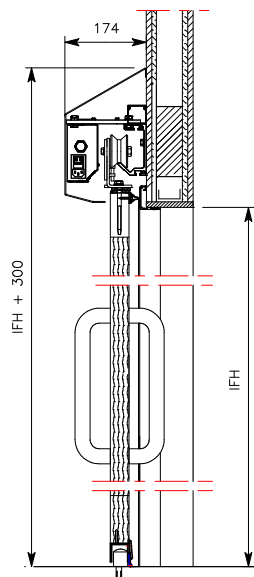
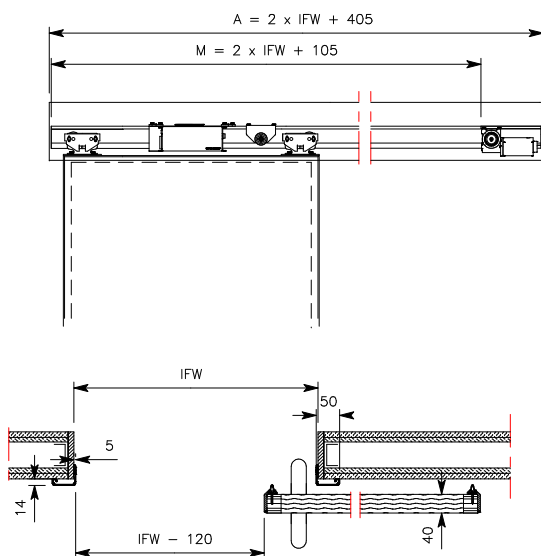
- Optional**
- Two-wing version
 - Various options for operation and protection
 - Various window and blind options
 - Medical grounding: potential equalisation or insulated
 - Imagine foil

Certificates When equipped with automation: CE marked according to Machinery Directive 2006/42/EC, Low Voltage Directive 2014/35/EC, EMC Directive 2014/30/EC.

Noise-reducing up to $R_w = 32$ dB (door leaf value) and $R_w/p = 28$ dB (practice value), according to ISO10140-1:2021 and ISO 717-1:2020.

In this review we will give you an idea of our capabilities. We offer not only standard solutions but also customised solutions.

Would you like more information? Please contact us, we will gladly think along and advise you.



A =	Automatic
M =	Manually
IFW =	Inside frame width
IFH =	Inside frame height

Metaflex Metaficient Sound

Peace, comfort, and concentration as well as saving space, ease of use, and hygiene? Why not opt for the Metaflex Metaficient Sound? This sliding door not only provides you with the practical and functional advantages mentioned above, you can also ensure virtually complete silence in a room.

The unique core of this door absorbs ambient noise up to 35 dB (Peutz door leaf value according to ISO717-1). The insulation of the sound vibrations guarantees a quiet and peaceful environment. The use of whisper-quiet Metaflex Automation for opening and closing the doors contributes to this further. The Metaflex Metaficient Sound is a reliable and pleasant solution for patient rooms, intensive care, or isolation rooms.



Automated or manual sliding door



Hygienic flush finish



Noise reducing up to 35 dB



CE marked



Metaflex Metaficient Sound



Dimensions

Inside frame width:
800 to 2,000 mm

Inside frame height:
2,100 to 2,600 mm

Automation (optional)

Available with powerful and reliable Metaflex automation.

Automation consisting of a motor, drive and controller is concealed under the cover. The opening and closing time is variably adjustable up to 0.8 m/s. Equipped with obstacle protection in the reveal opening. The system complies with machine guidelines and is compatible with EN16005 safety regulations. Comes standard with human passage and lock function with up to three other doors.

Various options for operation and protection available.

Door leaf The door leaf has a thickness of 40 mm, has a noise-reducing core with an MDF barrier layer on both sides, and is finished with high-pressure laminate. The aluminium border has rounded corners and is flush with the door leaf.

Seal All around, the door leaf is finished with a high quality and easily replaceable EPDM sealing profile. When closed, the rubber is pressed against the frame and floor.

Frame Choice of single sided corner profile, Malmö, Halmstad, Oslo, or Helsinki frame.

Rail Low-noise aluminium rail construction with indentation, type MF5. The placement of the nylon wheels on the rails prevents the adherence of dirt and wear.

Canopy Detachable canopy type Low, High, Ceiling, or Cove. Made from aluminium RAL 9006 or 9010, with a plastic headboard on either side or completely made of stainless steel.

Operation Equipped with a stainless-steel D-shaped handle on both sides.

Optional

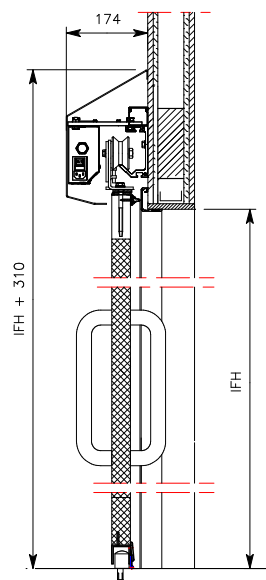
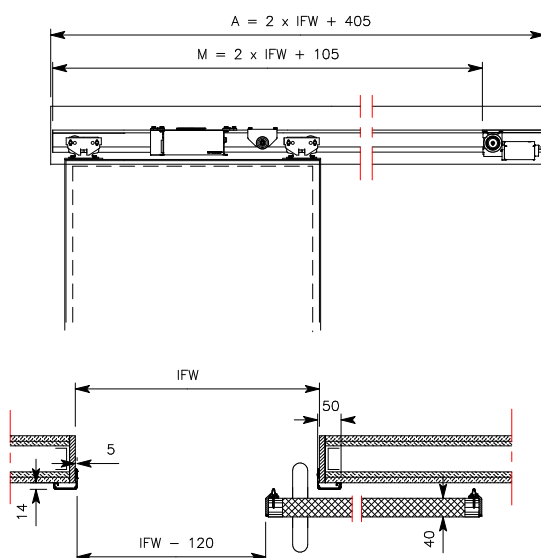
- Various options for operation and protection
- Medical grounding: potential equalisation or insulated
- Imagine foil

Certificates Noise reducing up to $R_w = 35$ dB (door leaf value) and $R_w/p = 35$ dB (practice value), according to ISO10140-1:2021 and ISO 717-1:2020.

When equipped with automation: CE marked according to Machinery Directive 2006/42/EC, Low Voltage Directive 2014/35/EC, EMC Directive 2014/30/EC.

In this review we will give you an idea of our capabilities. We offer not only standard solutions but also customised solutions.

Would you like more information? Please contact us, we will gladly think along and advise you.



A =	Automatic
M =	Manually
IFW =	Inside frame width
IFH =	Inside frame height

Options for operation

Manual operation



Hermetic opener
Stainless steel inner-outer opener with lever principle.



D-shaped handle
Stainless steel handle for light weighted doors.



Bowls shaped grip
Stainless steel grip handle that allows the door to fully open.

Automatic operation



MS1 contactless switch
Non-contact motion sensor based on radar technology.



MS2 Contactless Switch
Non-contact motion sensor with LED operation.



ES1 Elbow Switch
Nylon switch for opening automatic doors.



ES2 Elbow Switch
Nylon switch with stainless steel front for opening automatic doors.



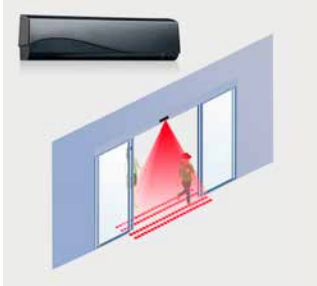
VS2 Foot Switch
Stainless steel foot switch for opening automatic doors.



VS3 Foot Switch
Motion sensor for non-contact opening of automatic doors.

Options for security & windows

Detection sensors



Security Sensor (infrared)

The security sensor uses the 3-dimensional infrared curtain to protect against contact with the doors.



Opening sensor (radar)

Opening sensor for automatic doors. Useful when the switch cannot be touched for reasons of hygiene or comfort.



Presence sensor (infrared + radar)

This sensor combines radar technology for the activation of the door with infrared technology for security.

Window blindings



Vertical blinds

Changes the glass from transparent to darkened by means of blinds that are incorporated into the glass. Available in white, light grey or grey.



Cellular shades

Creates privacy by means of double pleated curtain in the glass that can be closed (electrically).



Smart Glass

A switchable glass panel that can change from matte to transparent and vice versa at the push of a button.

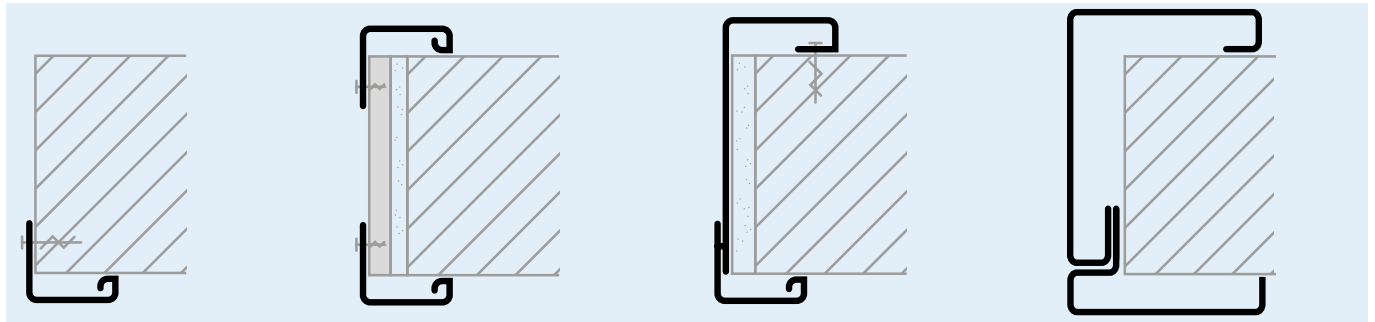


Laser resistant curtain/ glass

Protect people from harmful laser beams by means of a built-in laser-resistant curtain or laser-resistant glass.

Options frames & canopies

Frames

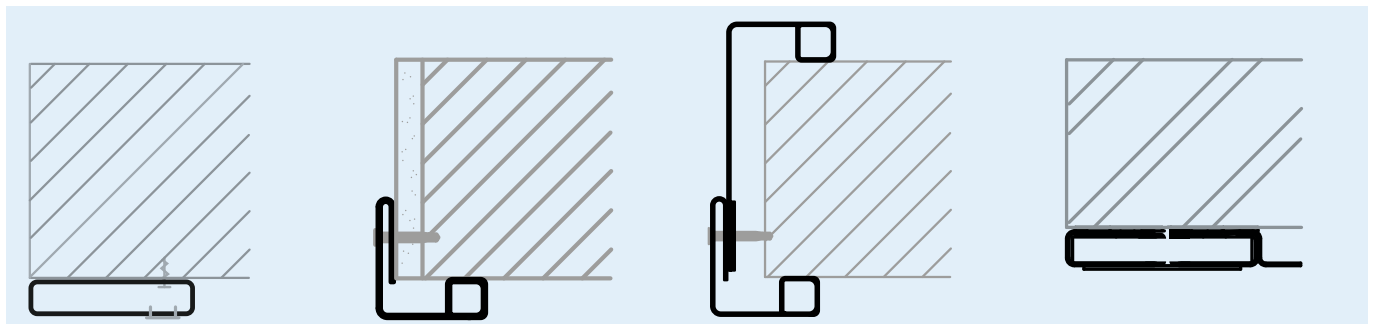


Assembly frame
Clear anodised aluminium assembly frame on one side.

Malmö
Comprehensive system frame, consisting of double-sided clear anodised aluminium assembly frame with HPL reveal finish in the colour of the door leaf.

Halmstad
Comprehensive system frame, consisting of one-sided clear anodised aluminium assembly frame and a brushed stainless steel reveal finish.

Oslo
Wrap-around frame in brushed stainless steel.



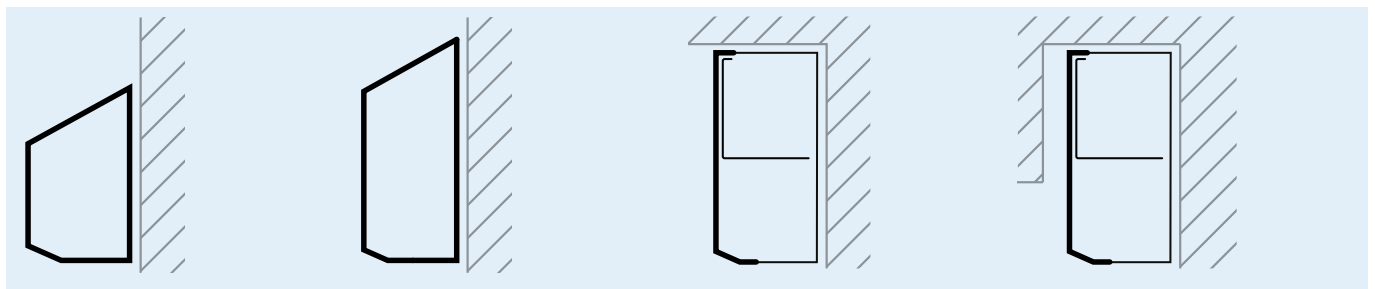
Oslo MK
One-sided frame in brushed stainless steel.

Assembly frame Inox
One-sided assembly frame in brushed or powdercoated stainless steel.

Helsinki
Comprehensive system frame, consisting of one-sided assembly frame and a reveal finish in brushed or powder coated stainless steel.

Medicare EI
Fire-retardant frame, with three-sided labyrinth, brushed stainless steel. A heat-responsive material is applied to the frame.

Canopies



Canopy Low
Sloping, removable aluminium cover in RAL 9006 or 9010, with plastic end caps on both sides, or completely in stainless steel. Suitable for rear engine.

Canopy High
Sloping, removable aluminium cover in RAL 9006 or 9010, with plastic end caps on both sides, or completely in stainless steel. Suitable for top motor.

Canopy Ceiling
Removable aluminium cover in RAL 9006 or 9010, with plastic end caps on both sides, or completely in stainless steel. Suitable for top or rear engine.

Canopy Cove
Removable aluminium cover in RAL 9006 or 9010, with plastic end caps on both sides, or completely in stainless steel. Suitable for top or rear engine.

